

# In maths we are learning about...

## Position and Direction

## Knowledge Organiser

### Key Vocabulary

forwards

backwards

left

right

north

south

east

west

quarter turn

half turn

three-quarter turn

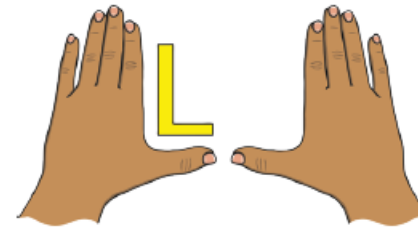
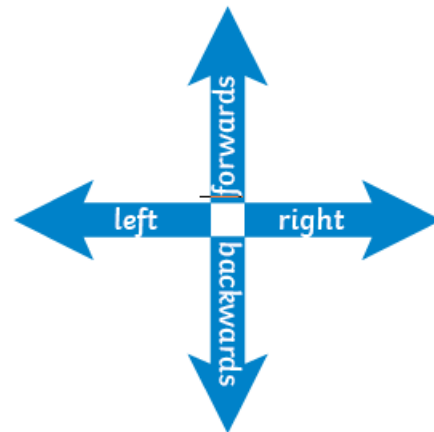
clockwise

anticlockwise

pattern

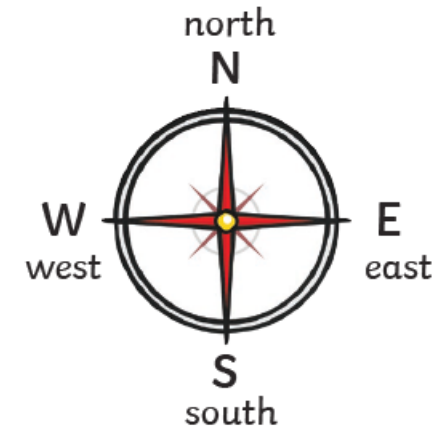
sequence

### Describing Straight-Line Movement

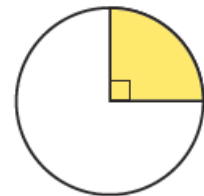


#### Left and Right

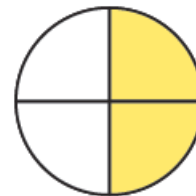
The hand that makes an L shape is the **left hand**.



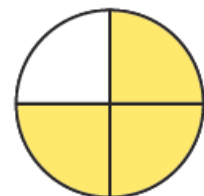
### Describing Turns



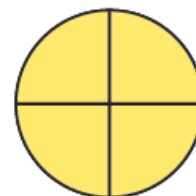
quarter turn



half turn

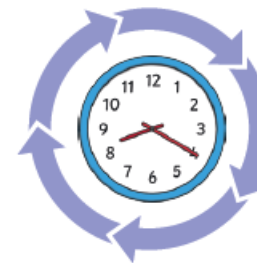


three-quarter turn



full turn

#### clockwise



#### anticlockwise



If the turn is in the same direction as the hands of a clock, it is **clockwise**.

If the turn is in the opposite direction to the hands of a clock, it is **anticlockwise**.