

# In geography we are learning about...

## Local Geography - Nottingham

### Key vocabulary

**City** - a large human settlement

**Town** - a built up area that is smaller than a city but larger than a village.

**Village** - a type of settlement where people live near one another and share local services and facilities.

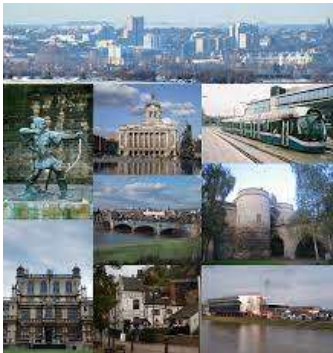
**Landmark** - place of interest or significance.

**Castle** - large building or group of buildings usually having high walls with towers that was built in the past to protect against attack

**Map** - A map is a drawing of all or part of Earth's surface.

**River** - A river is the path that water takes as it flows downhill towards the ocean.

**Road** - a long, narrow course, often with a smooth surface, for vehicles and people to travel on from one place to another.



### Sticky knowledge

- To place and locate Nottingham on a map of England.
- To know their address, including the postcode.
- To know that Nottingham is a city and what makes it a city.
- To know that Arnold is a town and what makes it a town.
- To know the differences between Nottingham and Arnold.



### Links to previous learning

- Learning about different countries around the world and our experiences of other countries.
- Investigating the local environment and our local community.
- Drawing information from a simple map.



### Key Information about Nottingham



Population: 331,297    River: River Trent    Officially became a city in: 1897

Key places: Nottingham Castle, Council House, Sherwood Forest, City Ground, Meadow Lane, Trent Bridge

### Aspirations

- Council worker
- Travel agent
- Forestry commission worker
- Tour guide



### Characteristics needed for this

topic:

- Curiosity
- Listening and communicating
- Questioning

