

In science we are learning about...

Light, shadows and the eye

Key vocabulary



- **Retina**- a layer at the back of the eyeball that contains cells sensitive to light, which trigger nerve impulse to the brain.
- **Reflect** - throw back (heat, light, or sound) without absorbing it.
- **Concave**- curved inwards.
- **Convex**- curved outwards.
- **Cornea**- the transparent part of the eye that covers the iris and the pupil and allows light to enter the inside.
- **Lens**- In the eye, the lens is a clear, curved structure at the front of the eye behind the pupil. It focuses light rays that enter the eye.
- **Transparent**- allowing light to pass through so that objects behind can be distinctly seen.
- **Translucent**- some light passes through it, but the light is scattered, so you can't see clearly through it.
- **Opaque**- cannot be seen through and does not allow light to pass through it.

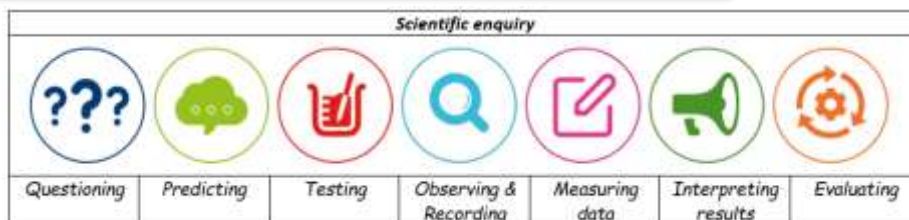
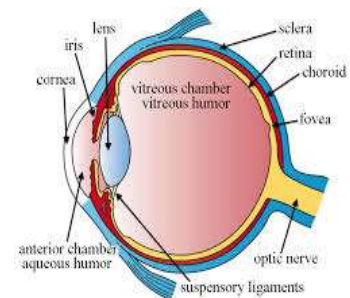


Sticky knowledge

- I know that light appears to travel in straight lines. It cannot bend around opaque/translucent objects which is why shadows are formed.
- I know that we see things because light travels from light sources directly into our eyes. Light sources can also reflect light off objects and then into our eyes.
- I know that the eye has a range of parts which help light to pass through. The retina is the part of the eye which sends messages to the brain to create the image that we see.

Links to previous learning

- I know that we need light in order to see things and that dark is the absence of light
- I know that light is reflected from surfaces.
- I know that light from the sun can be dangerous and that there are ways to protect your eyes.
- I know that shadows are formed when the light from a light source is blocked by an opaque object.



Aspirations

- Optician
- Ophthalmologist
- Physics/Biology teacher



Our characteristics

- Cooperation
- Problem Solving/Reasoning
- Making Links

